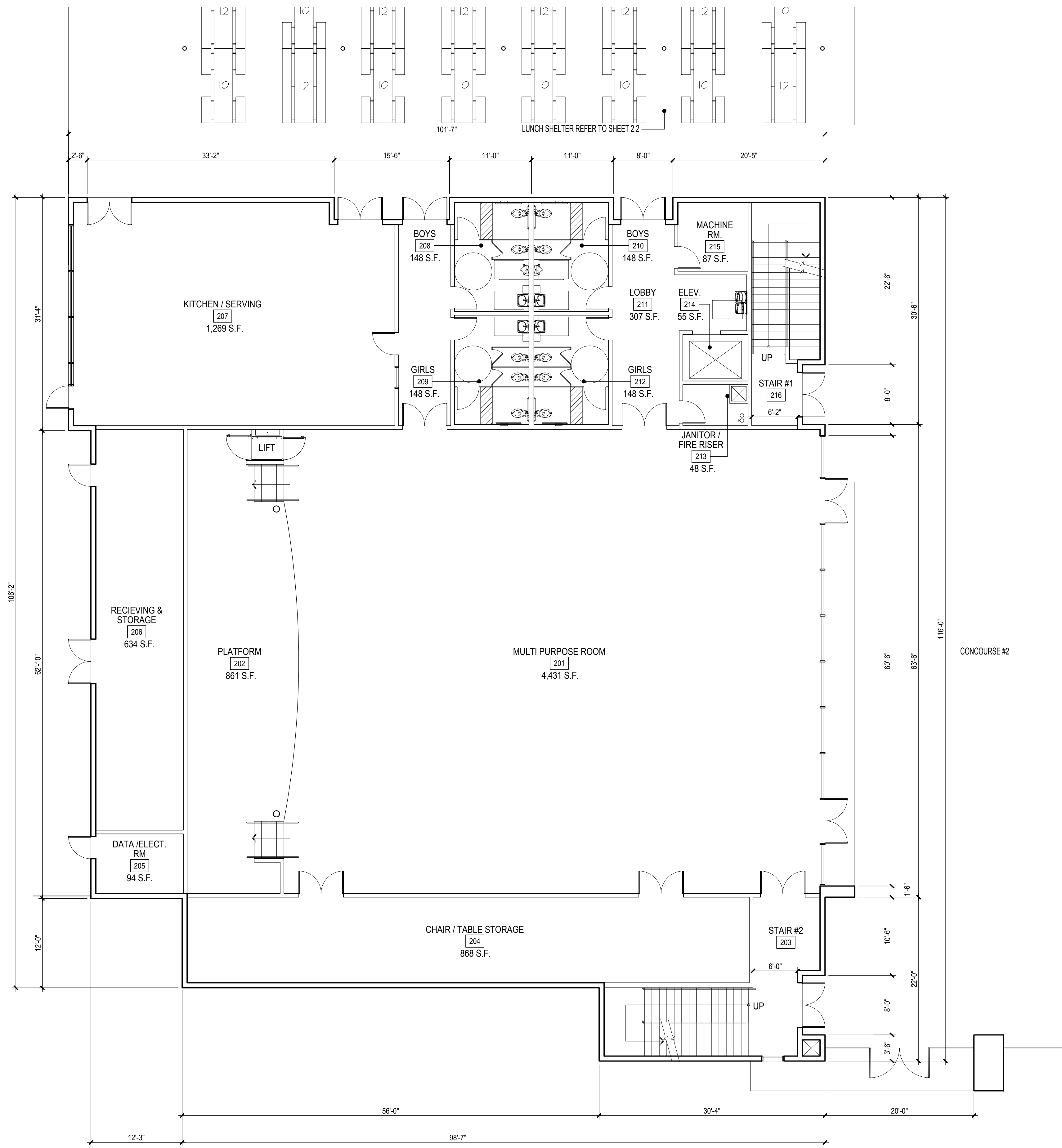
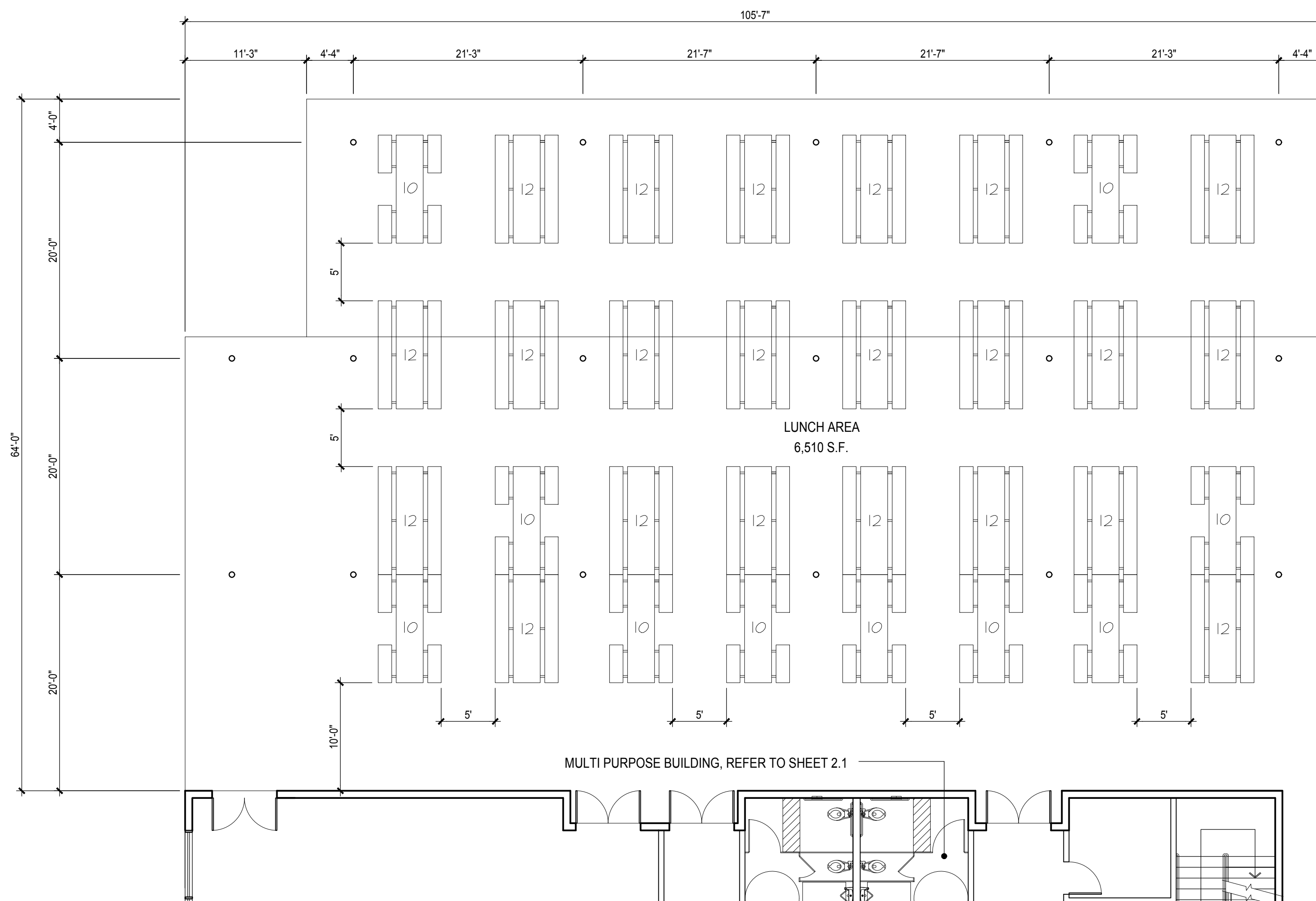


SECOND FLOOR PLAN
FLOOR AREA : 4,947 S.F.

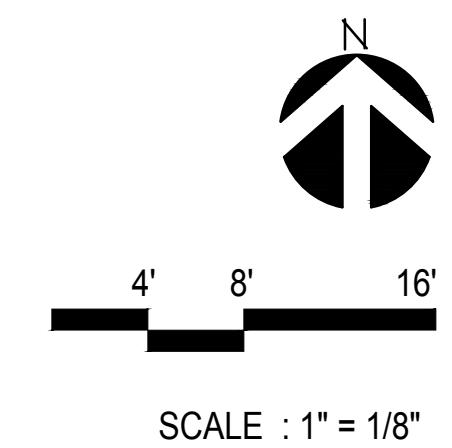


FIRST FLOOR PLAN
FLOOR AREA : 10,583 S.F.





SEATING CAPACITY
 STANDARD SEATING: 350
 ACCESSIBLE SEATING: 14
 TOTAL SEATING: 364
 (MINIMUM REQUIRED: 350)



STANLEY G. OSWALT ACADEMY
 19501 SHADOW OAK DR., WALNUT, CA 91789
ROWLAND UNIFIED SCHOOL DISTRICT

LUNCH AREA - FLOOR PLAN

COVERED GROSS AREA: 6,510S.F.

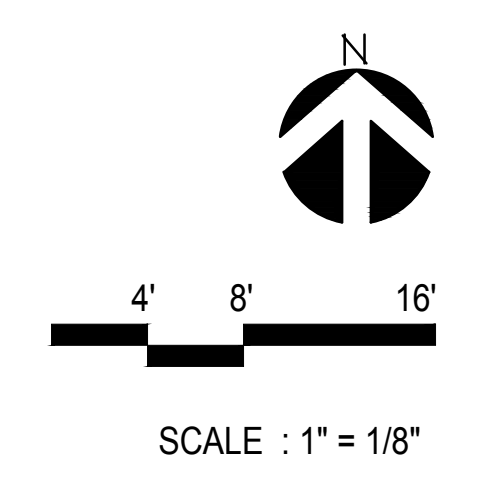
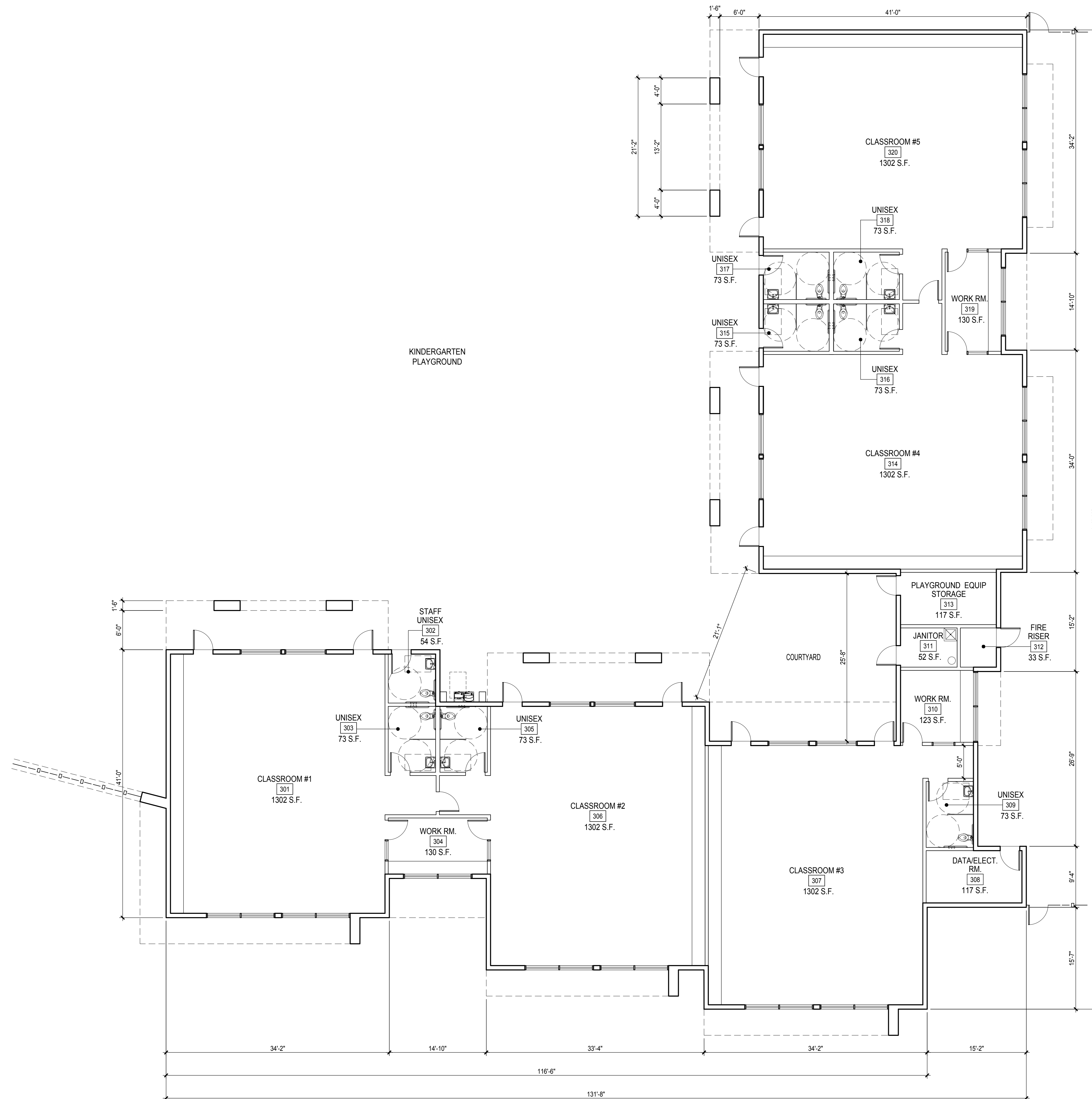
DATE: 8-08-2018
 REV. DATE: 8-17-2018
 JOB NO: 150703



ZIEMBA + PRIETO ARCHITECTS

601 South Glenoaks Blvd. • Suite 400 • Burbank, CA 91502
 P: (818) 841-2585 • F: (818) 841-7782 • www.ziembaprietoarch.com

SHEET
2.2



KINDERGARTEN BUILDING - FLOOR PLAN

BUILDING GROSS AREA: 8,636 S.F.



STANLEY G. OSWALT ACADEMY
19501 SHADOW OAK DR., WALNUT, CA 91789

ROWLAND UNIFIED SCHOOL DISTRICT

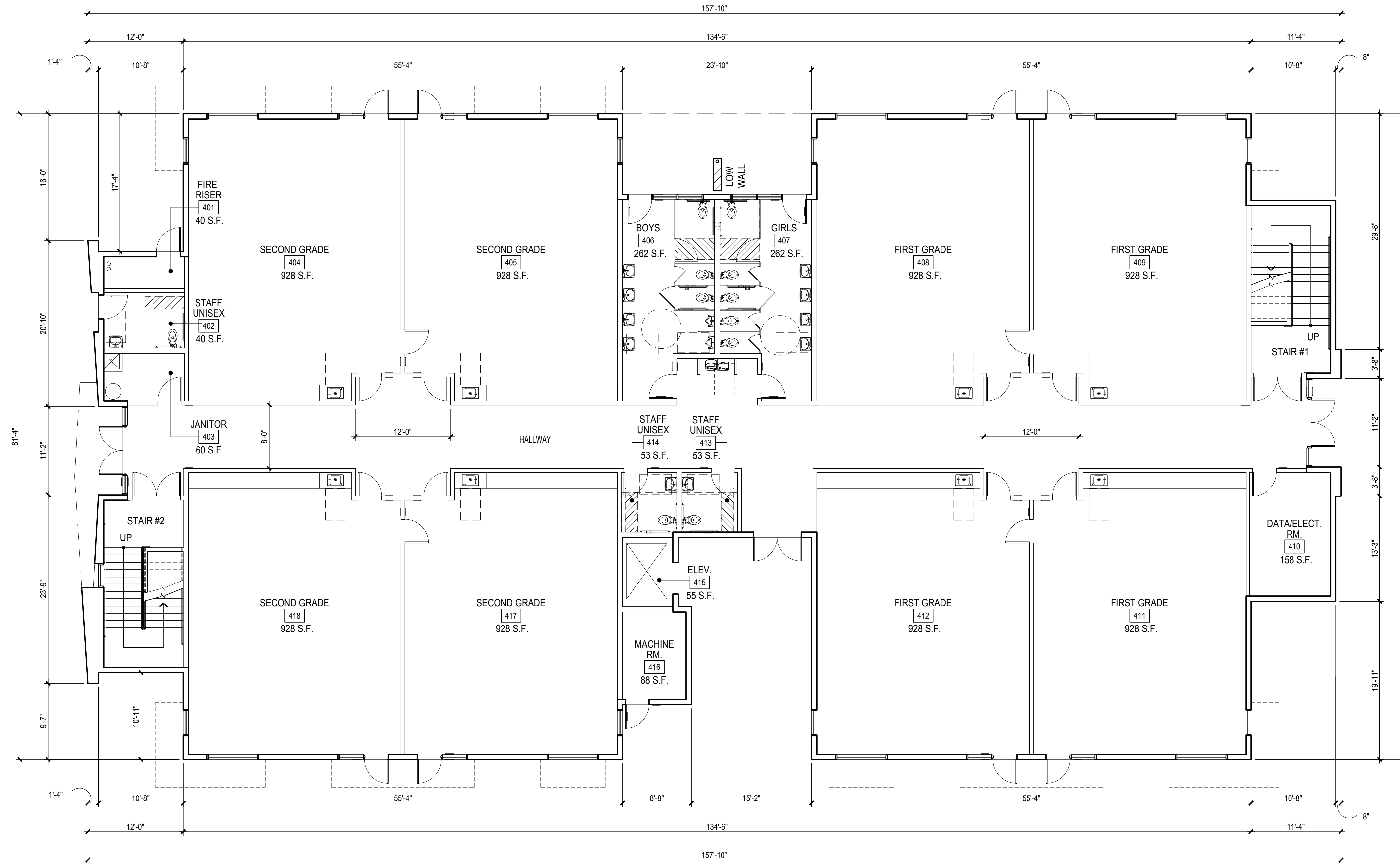


ZIEMBA + PRIETO ARCHITECTS

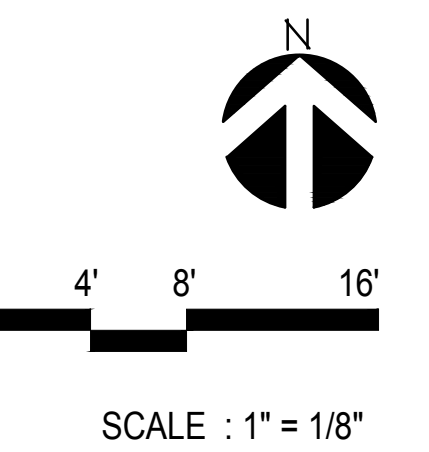
601 South Glenoaks Blvd. • Suite 400 • Burbank, CA 91502
P: (818) 841-2885 • F: (818) 841-7782 • www.ziembaprietoarch.com

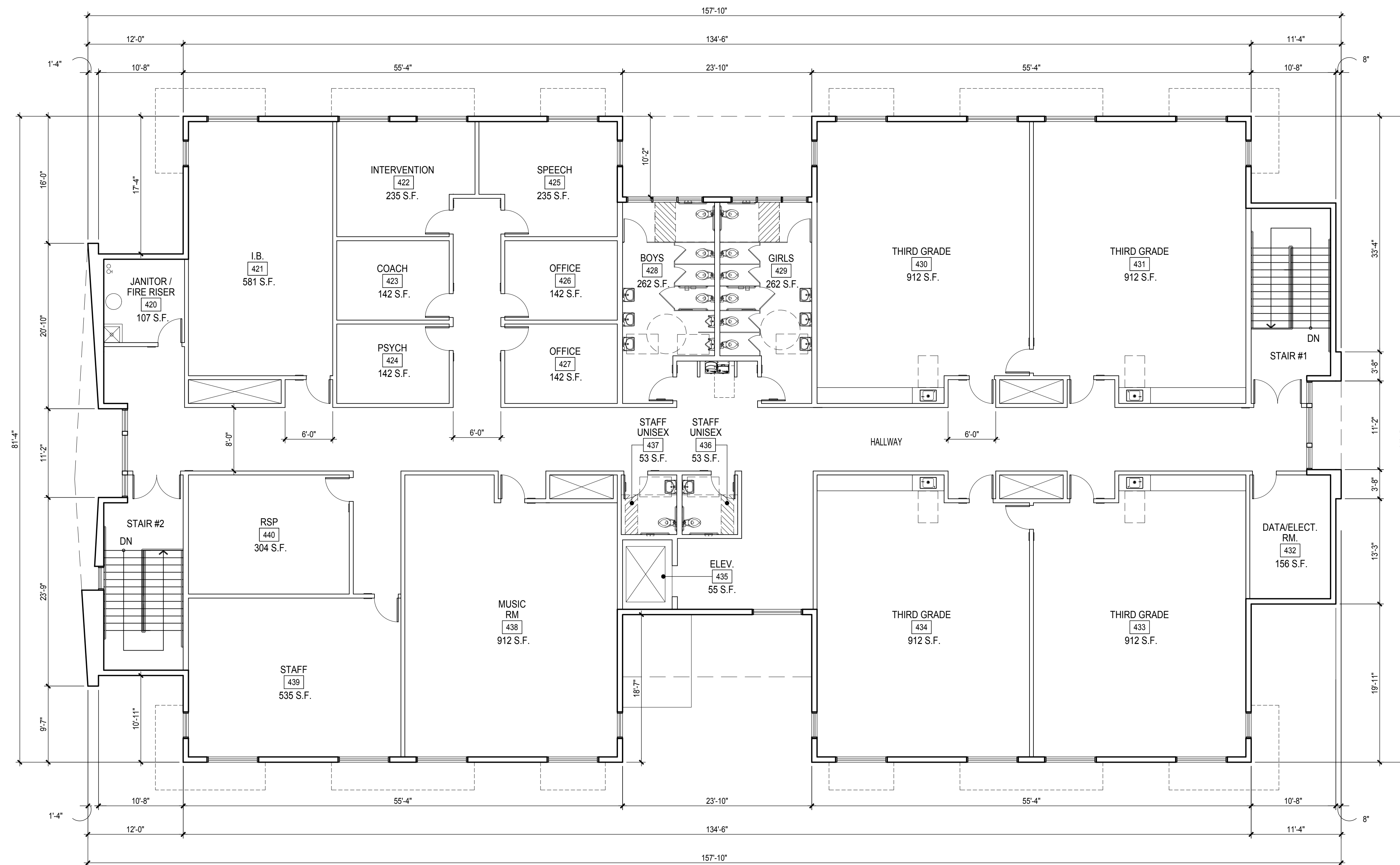
SHEET
3

DATE: 8-08-2018
REV. DATE: 8-17-2018
JOB NO: 150703

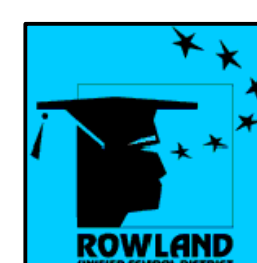
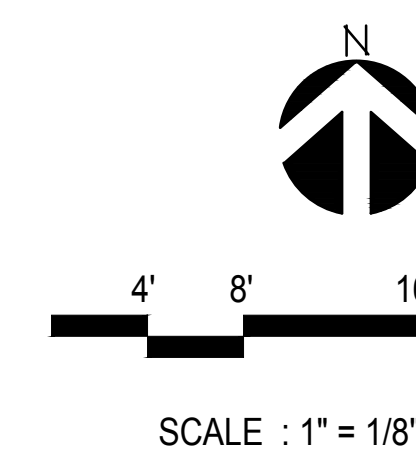


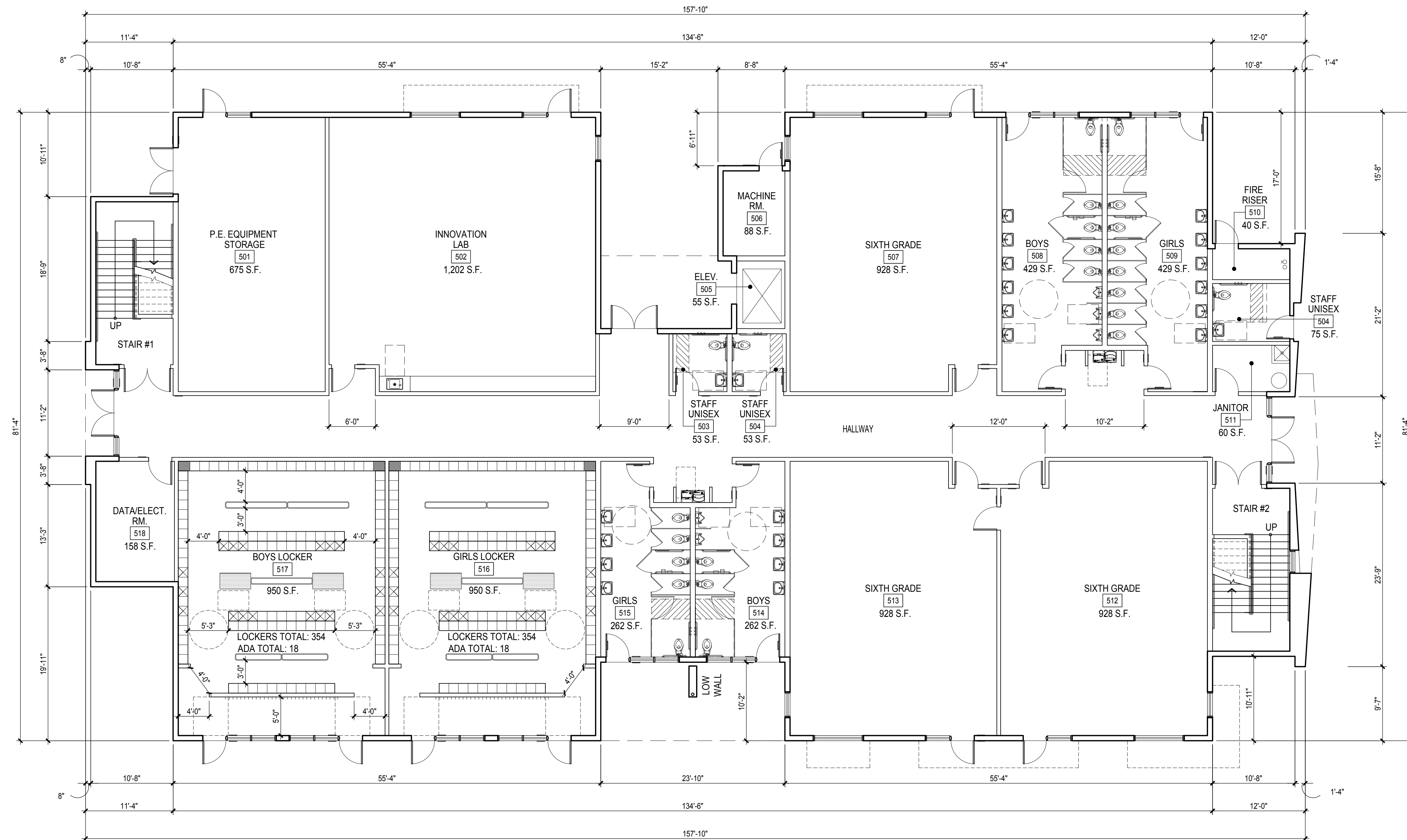
FIRST FLOOR PLAN
 FLOOR AREA : 11,235 S.F.



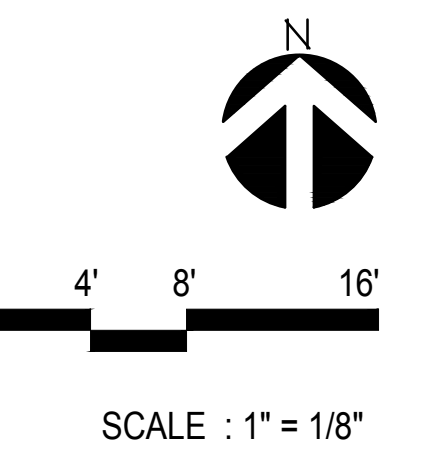


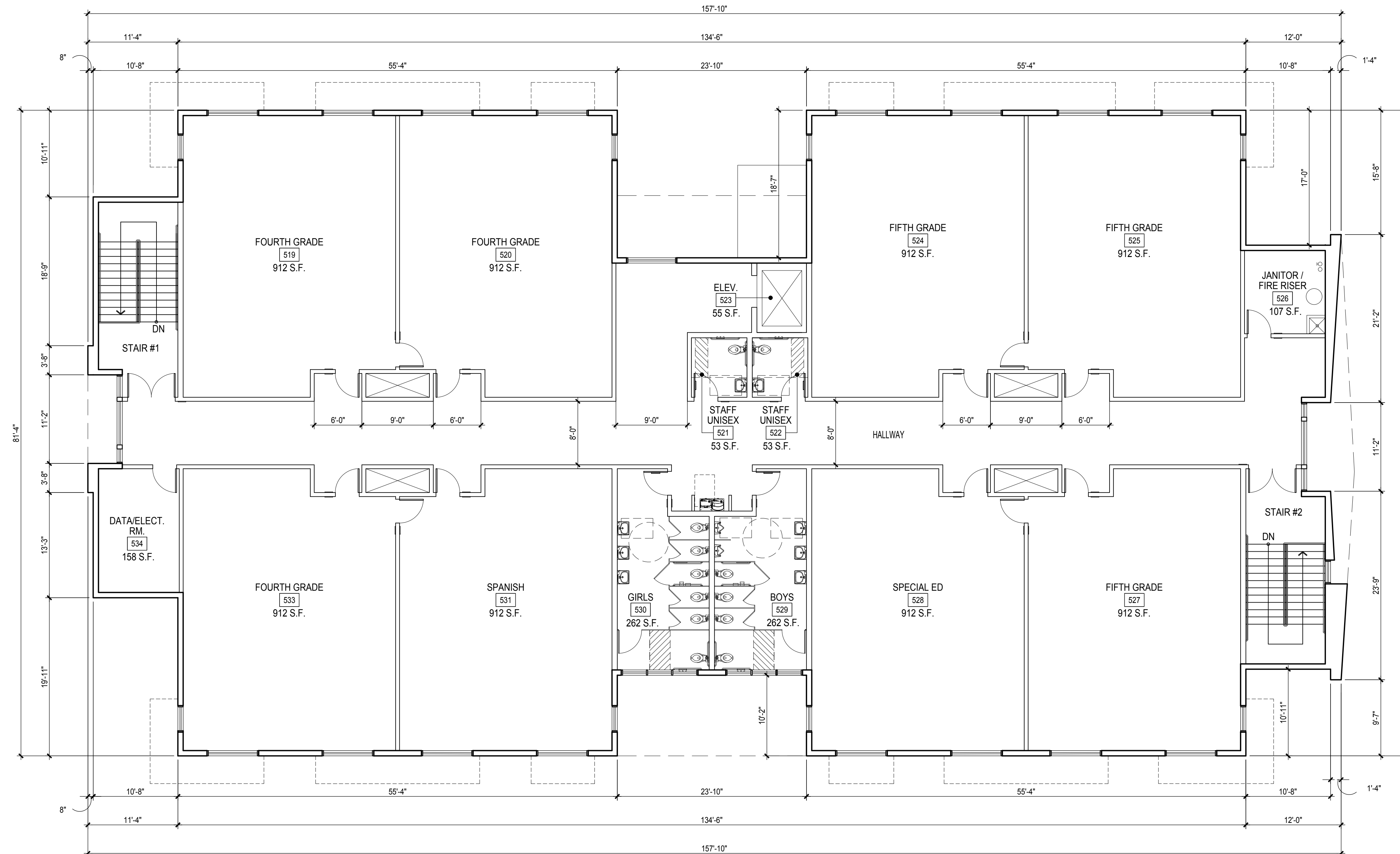
SECOND FLOOR PLAN
FLOOR AREA : 11,291 S.F.



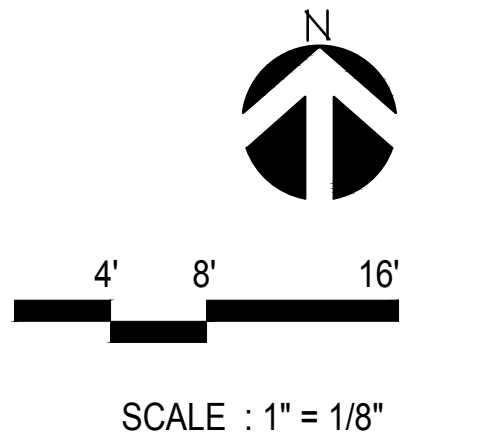


FIRST FLOOR PLAN
 FLOOR AREA : 11,225 S.F.

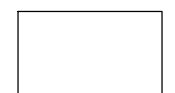



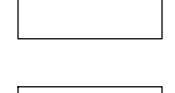
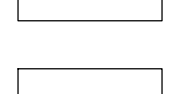
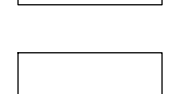





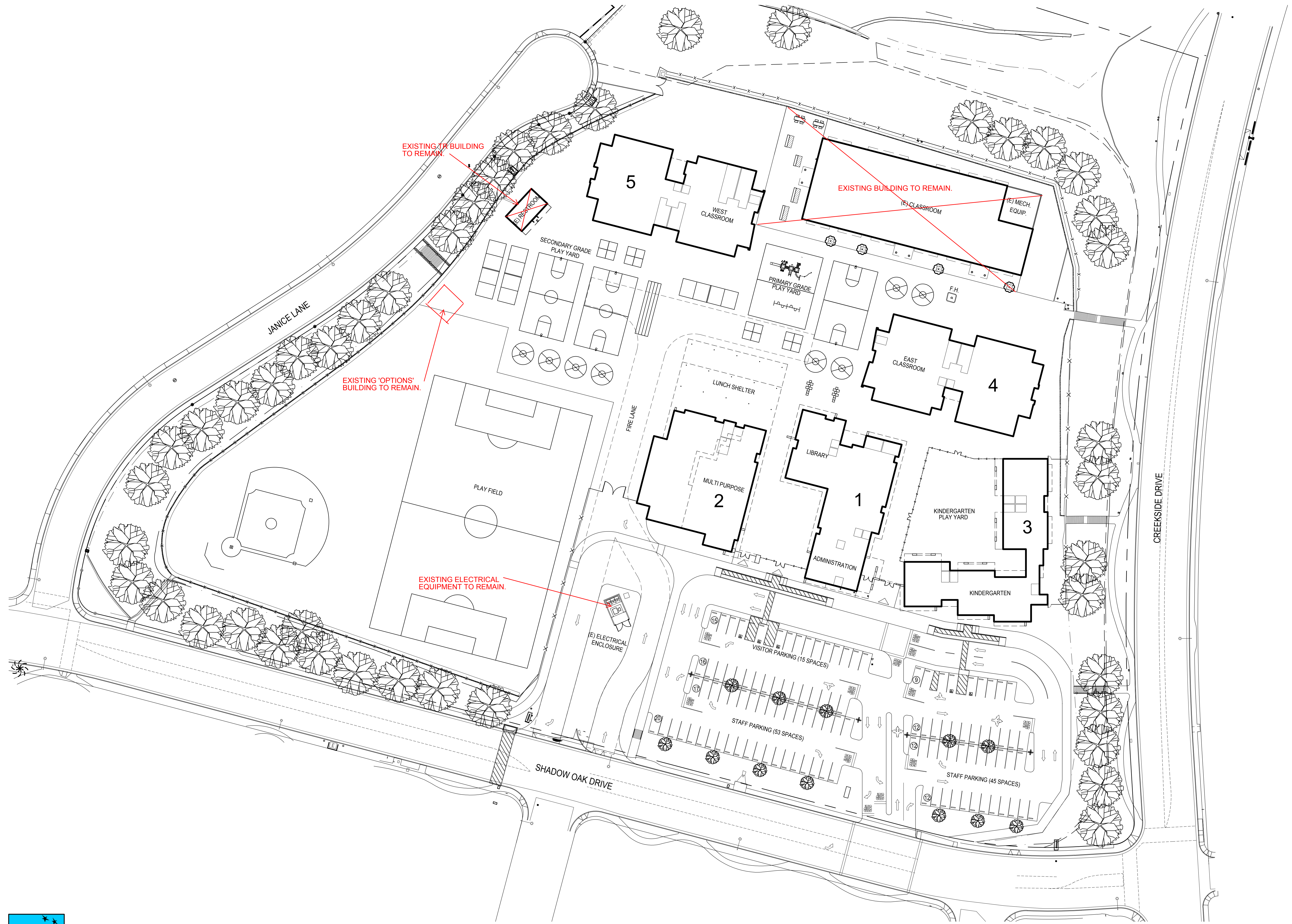


SECOND FLOOR PLAN
 FLOOR AREA : 11,296 S.F.

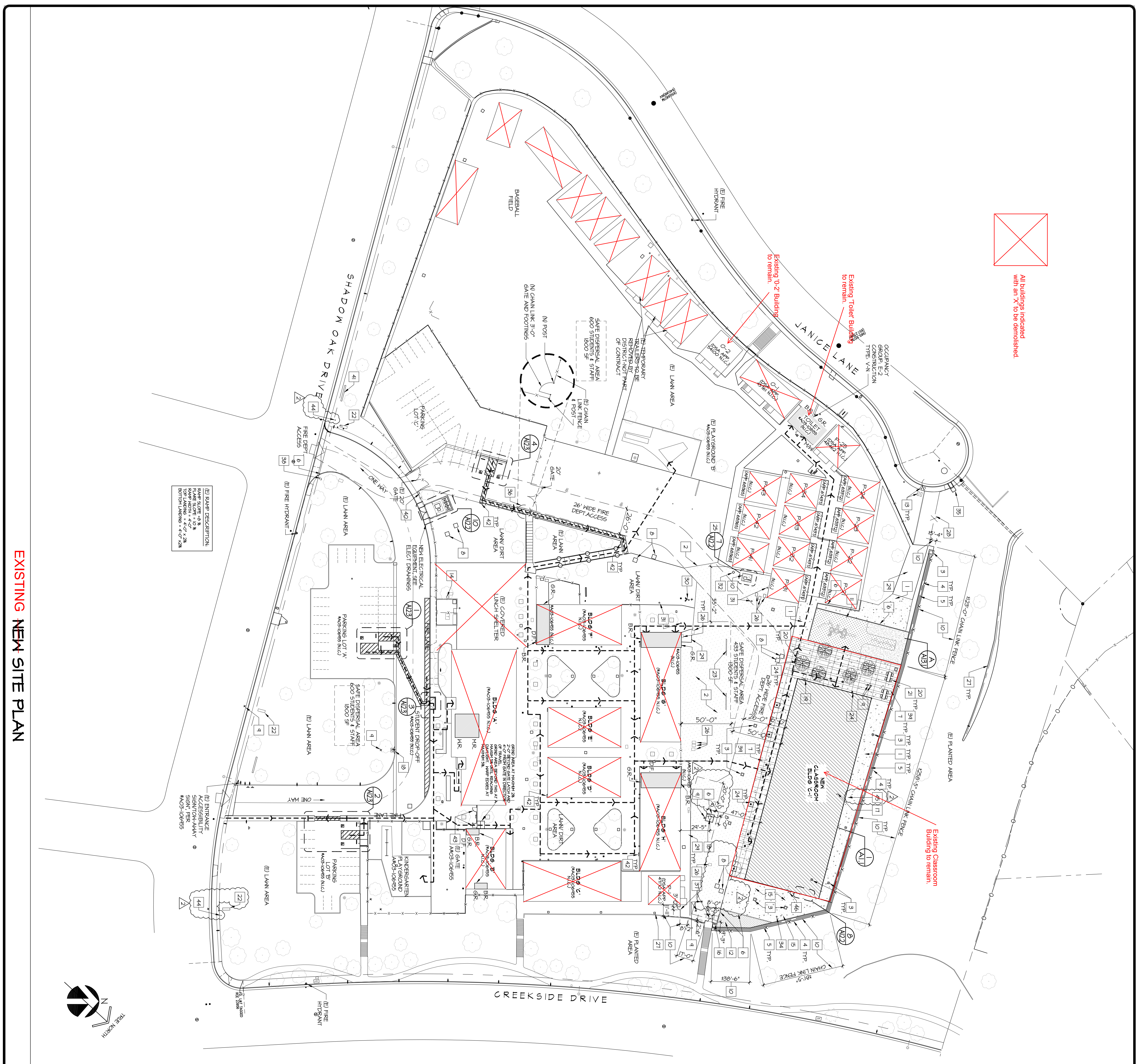


LEGEND

-  EXISTING CLASSROOM BUILDING
-  EXISTING RESTROOM BUILDING
-  EXISTING ELECTRICAL ENCLOSURE
-  ADMINISTRATION BUILDING
-  LIBRARY
-  MULTIPURPOSE BUILDING
-  CLASSROOM BUILDING
-  STAFF RESTROOMS
-  STUDENT RESTROOMS
-  STUDENT ACCESS GATES



PRELIMINARY SITE PLAN



All buildings indicated with an 'X' to be demolished.

Existing Classroom Building to remain.

Existing Trailer Building to remain.

Existing 2-2 Building to remain.

EXISTING NEW SITE PLAN

PARKING ANALYSIS

LOT 1A	(E) STANDARD PARKING SPACES	25
	(E) ACCESSIBLE VAN PARKING SPACES	1
	(E) ACCESSIBLE PARKING SPACES	2
LOT 1B	(E) STANDARD PARKING SPACES	16
	(E) ACCESSIBLE VAN PARKING SPACES	1
	(E) ACCESSIBLE PARKING SPACES	1
LOT 1C	(E) STANDARD PARKING SPACES	21
	(E) ACCESSIBLE VAN PARKING SPACES	2
	(E) ACCESSIBLE PARKING SPACES	1
SITE TOTAL	(E) STANDARD PARKING SPACES - TABLE 108-6.1	12
	(E) ACCESSIBLE VAN PARKING SPACES - TABLE 108-6.1	3
	(E) ACCESSIBLE PARKING SPACES - TABLE 108-6.1	3

LOCAL FIRE AUTHORITY REVIEW

LOCAL FIRE AUTHORITY TO INITIAL THE ITEMS AS APPLICABLE TO THIS PROJECT AND SIGN BELOW:
 YES NO YES NO
 (FOR APPLICATION # 0912981)
 ELECTRICAL
 MECHANICAL
 PLUMBING
 FIRE PROTECTION
 ACCESS SPACES, FIRE HYDRANTS, ELEVATORS, ESCALATORS, STAIRS, ETC.
 (SEE EXISTING DRAWINGS FOR HOBE INFORMATION AND THE LOCATION OF THE REFERENCED ITEMS. THE REFERENCED ITEMS MUST BE IDENTIFIED BY THE PROJECT NUMBER AND THE LOCATION OF THE REFERENCED ITEMS. THE REFERENCED ITEMS MUST BE IDENTIFIED BY THE PROJECT NUMBER AND THE LOCATION OF THE REFERENCED ITEMS.)
 APPROVED: _____ (Name print & sig)
 APPROVED: _____ (Name print & sig)

LOCAL FIRE AUTHORITY INFORMATION

AGENCY NAME: LOS ANGELES COUNTY FIRE DEPARTMENT
 ADDRESS: 580 S. PARK AVENUE
 PHONE NUMBER: (800) 820-2402 DATE: _____
 APPROVAL: _____ (Name print & sig)
 APPROVAL: _____ (Name print & sig)

LEGEND

- BR BOYS RESTROOM (N) NEW
- GR GIRLS RESTROOM (E) EXISTING
- MR MENS RESTROOM (C) CONC. CONCRETE
- DR DRINKING FOUNTAIN (P) RELOCATABLE BLDG. NO. 103-09-95
- NI.C. NOT IN CONTRACT
- PROPERTY LINE
- (E) FINING
- NEW CLASSROOM BUILDING
- (E) RELOCATABLE BUILDING TO REMAIN
- ASPHALT CONCRETE FINING
- CONCRETE SLAB
- PAVING
- POUR IN PLACE REBER
- LANDSCAPE AREAS

REMARKS

1. 4" THICK REINFORCED CONCRETE SLAB/RAILWAY REFER TO LANDSCAPE. CIVIL DWGS AND SOLS REPORT FOR HOBE INFORMATION.
2. 4" THICK ASPHALT CONCRETE FINING OVER SUB-BASE GRADE PER CIVIL DWGS AND SOLS REPORT FOR HOBE INFORMATION.
3. 4" THICK CONCRETE BLOCK / RETAINING WALL REFER TO CIVIL AND LANDSCAPE DWGS FOR HOBE INFORMATION.
4. CONCRETE GUTTER REFER TO CIVIL DWGS FOR HOBE INFORMATION.
5. 4" THICK REINFORCED CONCRETE SLAB REFER TO LANDSCAPE, CIVIL DWGS AND SOLS REPORT FOR HOBE INFORMATION.
6. PRECAST CONCRETE ELECTRICAL RIGID BOX REFER TO ELECTRICAL DWGS FOR HOBE INFORMATION.
7. ELECTRICAL RIGID BOX/STABILIZATION BOARD TO BE INSTALLED FOR ALL LOCATIONS.
8. WATER VALVE REFER TO CIVIL DWGS FOR HOBE INFORMATION.
9. CHAIN LINK FENCING REFER TO DETAIL (A12) (A13) (A14) (A15) (A16) (A17) (A18) (A19) (A20) (A21) (A22) (A23) (A24) (A25) (A26) (A27) (A28) (A29) (A30) (A31) (A32) (A33) (A34) (A35) (A36) (A37) (A38) (A39) (A40) (A41) (A42) (A43) (A44) (A45) (A46) (A47) (A48) (A49) (A50) (A51) (A52) (A53) (A54) (A55) (A56) (A57) (A58) (A59) (A60) (A61) (A62) (A63) (A64) (A65) (A66) (A67) (A68) (A69) (A70) (A71) (A72) (A73) (A74) (A75) (A76) (A77) (A78) (A79) (A80) (A81) (A82) (A83) (A84) (A85) (A86) (A87) (A88) (A89) (A90) (A91) (A92) (A93) (A94) (A95) (A96) (A97) (A98) (A99) (A100) (A101) (A102) (A103) (A104) (A105) (A106) (A107) (A108) (A109) (A110) (A111) (A112) (A113) (A114) (A115) (A116) (A117) (A118) (A119) (A120) (A121) (A122) (A123) (A124) (A125) (A126) (A127) (A128) (A129) (A130) (A131) (A132) (A133) (A134) (A135) (A136) (A137) (A138) (A139) (A140) (A141) (A142) (A143) (A144) (A145) (A146) (A147) (A148) (A149) (A150) (A151) (A152) (A153) (A154) (A155) (A156) (A157) (A158) (A159) (A160) (A161) (A162) (A163) (A164) (A165) (A166) (A167) (A168) (A169) (A170) (A171) (A172) (A173) (A174) (A175) (A176) (A177) (A178) (A179) (A180) (A181) (A182) (A183) (A184) (A185) (A186) (A187) (A188) (A189) (A190) (A191) (A192) (A193) (A194) (A195) (A196) (A197) (A198) (A199) (A200) (A201) (A202) (A203) (A204) (A205) (A206) (A207) (A208) (A209) (A210) (A211) (A212) (A213) (A214) (A215) (A216) (A217) (A218) (A219) (A220) (A221) (A222) (A223) (A224) (A225) (A226) (A227) (A228) (A229) (A230) (A231) (A232) (A233) (A234) (A235) (A236) (A237) (A238) (A239) (A240) (A241) (A242) (A243) (A244) (A245) (A246) (A247) (A248) (A249) (A250) (A251) (A252) (A253) (A254) (A255) (A256) (A257) (A258) (A259) (A260) (A261) (A262) (A263) (A264) (A265) (A266) (A267) (A268) (A269) (A270) (A271) (A272) (A273) (A274) (A275) (A276) (A277) (A278) (A279) (A280) (A281) (A282) (A283) (A284) (A285) (A286) (A287) (A288) (A289) (A290) (A291) (A292) (A293) (A294) (A295) (A296) (A297) (A298) (A299) (A300) (A301) (A302) (A303) (A304) (A305) (A306) (A307) (A308) (A309) (A310) (A311) (A312) (A313) (A314) (A315) (A316) (A317) (A318) (A319) (A320) (A321) (A322) (A323) (A324) (A325) (A326) (A327) (A328) (A329) (A330) (A331) (A332) (A333) (A334) (A335) (A336) (A337) (A338) (A339) (A340) (A341) (A342) (A343) (A344) (A345) (A346) (A347) (A348) (A349) (A350) (A351) (A352) (A353) (A354) (A355) (A356) (A357) (A358) (A359) (A360) (A361) (A362) (A363) (A364) (A365) (A366) (A367) (A368) (A369) (A370) (A371) (A372) (A373) (A374) (A375) (A376) (A377) (A378) (A379) (A380) (A381) (A382) (A383) (A384) (A385) (A386) (A387) (A388) (A389) (A390) (A391) (A392) (A393) (A394) (A395) (A396) (A397) (A398) (A399) (A400) (A401) (A402) (A403) (A404) (A405) (A406) (A407) (A408) (A409) (A410) (A411) (A412) (A413) (A414) (A415) (A416) (A417) (A418) (A419) (A420) (A421) (A422) (A423) (A424) (A425) (A426) (A427) (A428) (A429) (A430) (A431) (A432) (A433) (A434) (A435) (A436) (A437) (A438) (A439) (A440) (A441) (A442) (A443) (A444) (A445) (A446) (A447) (A448) (A449) (A450) (A451) (A452) (A453) (A454) (A455) (A456) (A457) (A458) (A459) (A460) (A461) (A462) (A463) (A464) (A465) (A466) (A467) (A468) (A469) (A470) (A471) (A472) (A473) (A474) (A475) (A476) (A477) (A478) (A479) (A480) (A481) (A482) (A483) (A484) (A485) (A486) (A487) (A488) (A489) (A490) (A491) (A492) (A493) (A494) (A495) (A496) (A497) (A498) (A499) (A500) (A501) (A502) (A503) (A504) (A505) (A506) (A507) (A508) (A509) (A510) (A511) (A512) (A513) (A514) (A515) (A516) (A517) (A518) (A519) (A520) (A521) (A522) (A523) (A524) (A525) (A526) (A527) (A528) (A529) (A530) (A531) (A532) (A533) (A534) (A535) (A536) (A537) (A538) (A539) (A540) (A541) (A542) (A543) (A544) (A545) (A546) (A547) (A548) (A549) (A550) (A551) (A552) (A553) (A554) (A555) (A556) (A557) (A558) (A559) (A560) (A561) (A562) (A563) (A564) (A565) (A566) (A567) (A568) (A569) (A570) (A571) (A572) (A573) (A574) (A575) (A576) (A577) (A578) (A579) (A580) (A581) (A582) (A583) (A584) (A585) (A586) (A587) (A588) (A589) (A590) (A591) (A592) (A593) (A594) (A595) (A596) (A597) (A598) (A599) (A600) (A601) (A602) (A603) (A604) (A605) (A606) (A607) (A608) (A609) (A610) (A611) (A612) (A613) (A614) (A615) (A616) (A617) (A618) (A619) (A620) (A621) (A622) (A623) (A624) (A625) (A626) (A627) (A628) (A629) (A630) (A631) (A632) (A633) (A634) (A635) (A636) (A637) (A638) (A639) (A640) (A641) (A642) (A643) (A644) (A645) (A646) (A647) (A648) (A649) (A650) (A651) (A652) (A653) (A654) (A655) (A656) (A657) (A658) (A659) (A660) (A661) (A662) (A663) (A664) (A665) (A666) (A667) (A668) (A669) (A670) (A671) (A672) (A673) (A674) (A675) (A676) (A677) (A678) (A679) (A680) (A681) (A682) (A683) (A684) (A685) (A686) (A687) (A688) (A689) (A690) (A691) (A692) (A693) (A694) (A695) (A696) (A697) (A698) (A699) (A700) (A701) (A702) (A703) (A704) (A705) (A706) (A707) (A708) (A709) (A710) (A711) (A712) (A713) (A714) (A715) (A716) (A717) (A718) (A719) (A720) (A721) (A722) (A723) (A724) (A725) (A726) (A727) (A728) (A729) (A730) (A731) (A732) (A733) (A734) (A735) (A736) (A737) (A738) (A739) (A740) (A741) (A742) (A743) (A744) (A745) (A746) (A747) (A748) (A749) (A750) (A751) (A752) (A753) (A754) (A755) (A756) (A757) (A758) (A759) (A760) (A761) (A762) (A763) (A764) (A765) (A766) (A767) (A768) (A769) (A770) (A771) (A772) (A773) (A774) (A775) (A776) (A777) (A778) (A779) (A780) (A781) (A782) (A783) (A784) (A785) (A786) (A787) (A788) (A789) (A790) (A791) (A792) (A793) (A794) (A795) (A796) (A797) (A798) (A799) (A800) (A801) (A802) (A803) (A804) (A805) (A806) (A807) (A808) (A809) (A810) (A811) (A812) (A813) (A814) (A815) (A816) (A817) (A818) (A819) (A820) (A821) (A822) (A823) (A824) (A825) (A826) (A827) (A828) (A829) (A830) (A831) (A832) (A833) (A834) (A835) (A836) (A837) (A838) (A839) (A840) (A841) (A842) (A843) (A844) (A845) (A846) (A847) (A848) (A849) (A850) (A851) (A852) (A853) (A854) (A855) (A856) (A857) (A858) (A859) (A860) (A861) (A862) (A863) (A864) (A865) (A866) (A867) (A868) (A869) (A870) (A871) (A872) (A873) (A874) (A875) (A876) (A877) (A878) (A879) (A880) (A881) (A882) (A883) (A884) (A885) (A886) (A887) (A888) (A889) (A890) (A891) (A892) (A893) (A894) (A895) (A896) (A897) (A898) (A899) (A900) (A901) (A902) (A903) (A904) (A905) (A906) (A907) (A908) (A909) (A910) (A911) (A912) (A913) (A914) (A915) (A916) (A917) (A918) (A919) (A920) (A921) (A922) (A923) (A924) (A925) (A926) (A927) (A928) (A929) (A930) (A931) (A932) (A933) (A934) (A935) (A936) (A937) (A938) (A939) (A940) (A941) (A942) (A943) (A944) (A945) (A946) (A947) (A948) (A949) (A950) (A951) (A952) (A953) (A954) (A955) (A956) (A957) (A958) (A959) (A960) (A961) (A962) (A963) (A964) (A965) (A966) (A967) (A968) (A969) (A970) (A971) (A972) (A973) (A974) (A975) (A976) (A977) (A978) (A979) (A980) (A981) (A982) (A983) (A984) (A985) (A986) (A987) (A988) (A989) (A990) (A991) (A992) (A993) (A994) (A995) (A996) (A997) (A998) (A999) (A1000) (A1001) (A1002) (A1003) (A1004) (A1005) (A1006) (A1007) (A1008) (A1009) (A1010) (A1011) (A1012) (A1013) (A1014) (A1015) (A1016) (A1017) (A1018) (A1019) (A1020) (A1021) (A1022) (A1023) (A1024) (A1025) (A1026) (A1027) (A1028) (A1029) (A1030) (A1031) (A1032) (A1033) (A1034) (A1035) (A1036) (A1037) (A1038) (A1039) (A1040) (A1041) (A1042) (A1043) (A1044) (A1045) (A1046) (A1047) (A1048) (A1049) (A1050) (A1051) (A1052) (A1053) (A1054) (A1055) (A1056) (A1057) (A1058) (A1059) (A1060) (A1061) (A1062) (A1063) (A1064) (A1065) (A1066) (A1067) (A1068) (A1069) (A1070) (A1071) (A1072) (A1073) (A1074) (A1075) (A1076) (A1077) (A1078) (A1079) (A1080) (A1081) (A1082) (A1083) (A1084) (A1085) (A1086) (A1087) (A1088) (A1089) (A1090) (A1091) (A1092) (A1093) (A1094) (A1095) (A1096) (A1097) (A1098) (A1099) (A1100) (A1101) (A1102) (A1103) (A1104) (A1105) (A1106) (A1107) (A1108) (A1109) (A1110) (A1111) (A1112) (A1113) (A1114) (A1115) (A1116) (A1117) (A1118) (A1119) (A1120) (A1121) (A1122) (A1123) (A1124) (A1125) (A1126) (A1127) (A1128) (A1129) (A1130) (A1131) (A1132) (A1133) (A1134) (A1135) (A1136) (A1137) (A1138) (A1139) (A1140) (A1141) (A1142) (A1143) (A1144) (A1145) (A1146) (A1147) (A1148) (A1149) (A1150) (A1151) (A1152) (A1153) (A1154) (A1155) (A1156) (A1157) (A1158) (A1159) (A1160) (A1161) (A1162) (A1163) (A1164) (A1165) (A1166) (A1167) (A1168) (A1169) (A1170) (A1171) (A1172) (A1173) (A1174) (A1175) (A1176) (A1177) (A1178) (A1179) (A1180) (A1181) (A1182) (A1183) (A1184) (A1185) (A1186) (A1187) (A1188) (A1189) (A1190) (A1191) (A1192) (A1193) (A1194) (A1195) (A1196) (A1197) (A1198) (A1199) (A1200) (A1201) (A1202) (A1203) (A1204) (A1205) (A1206) (A1207) (A1208) (A1209) (A1210) (A1211) (A1212) (A1213) (A1214) (A1215) (A1216) (A1217) (A1218) (A1219) (A1220) (A1221) (A1222) (A1223) (A1224) (A1225) (A1226) (A1227) (A1228) (A1229) (A1230) (A1231) (A1232) (A1233) (A1234) (A1235) (A1236) (A1237) (A1238) (A1239) (A1240) (A1241) (A1242) (A1243) (A1244) (A1245) (A1246) (A1247) (A1248) (A1249) (A1250) (A1251) (A1252) (A1253) (A1254) (A1255) (A1256) (A1257) (A1258) (A1259) (A1260) (A1261) (A1262) (A1263) (A1264) (A1265) (A1266) (A1267) (A1268) (A1269) (A1270) (A1271) (A1272) (A1273) (A1274) (A1275) (A1276) (A1277) (A1278) (A1279) (A1280) (A1281) (A1282) (A1283) (A1284) (A1285) (A1286) (A1287) (A1288) (A1289) (A1290) (A1291) (A1292) (A1293) (A1294) (A1295) (A1296) (A1297) (A1298) (A1299) (A1300) (A1301) (A1302) (A1303) (A1304) (A1305) (A1306) (A1307) (A1308) (A1309) (A1310) (A1311) (A1312) (A1313) (A1314) (A1315) (A1316) (A1317) (A1318) (A1319) (A1320) (A1321) (A1322) (A1323) (A1324) (A1325) (A1326) (A1327) (A1328) (A1329) (A1330) (A1331) (A1332) (A1333) (A1334) (A1335) (A1336) (A1337) (A1338) (A1339) (A1340) (A1341) (A1342) (A1343) (A1344) (A1345) (A1346) (A1347) (A1348) (A1349) (A1350) (A1351) (A1352) (A1353) (A1354) (A1355) (A1356) (A1357) (A1358) (A1359) (A1360) (A1361) (A1362) (A1363) (A1364) (A1365) (A1366) (A1367) (A1368) (A1369) (A1370) (A1371) (A1372) (A1373) (A1374) (A1375) (A1376) (A1377) (A1378) (A1379) (A1380) (A1381) (A1382) (A1383) (A1384) (A1385) (A1386) (A1387) (A1388) (A1389) (A1390) (A1391) (A1392) (A1393) (A1394) (A1395) (A1396) (A1397) (A1398) (A1399) (A1400) (A1401) (A1402) (A1403) (A1404) (A1405) (A1406) (A1407) (A1408) (A1409) (A1410) (A1411) (A1412) (A1413) (A1414) (A1415) (A1416) (A1417) (A1418) (A1419) (A1420) (A1421) (A1422) (A1423) (A1424) (A1425) (A1426) (A1427) (A1428) (A1429) (A1430) (A1431) (A1432) (A1433) (A1434) (A1435) (A1436) (A1437) (A1438) (A1439) (A1440) (A1441) (A1442) (A1443) (A1444) (A1445) (A1446) (A1447) (A1448) (A1449) (A1450) (A1451) (A1452) (A1453) (A1454) (A1455) (A1456) (A1457) (A1458) (A1459) (A1460) (A1461) (A1462) (A1463) (A1464) (A1465) (A1466) (A1467) (A1468) (A1469) (A1470) (A1471) (A1472) (A1473) (A1474) (A1475) (A1476) (A1477) (A1478) (A1479) (A1480) (A1481) (A1482) (A1483) (A1484) (A1485) (A1486) (A1487) (A1488) (A1489) (A1490) (A1491) (A1492) (A1493) (A1494) (A1495) (A1496) (A1497) (A1498) (A1499) (A1500) (A1501) (A1502) (A1503) (A1504) (A1505) (A1506) (A1507) (A1508) (A1509) (A1510) (A1511) (A1512) (A1513) (A1514) (A1515) (A1516) (A1517) (A1518) (A1519) (A1520) (A1521) (A1522) (A1523) (A1524) (A1525) (A1526) (A1527) (A1528) (A1529) (A1530) (A1531) (A1532) (A1533) (A1534) (A1535) (A1536) (A1537) (A1538) (A1539) (A1540) (A1541) (A1542) (A1543) (A1544) (A1545) (A1546) (A1547) (A1548) (A1549) (A1550) (A1551) (A1552) (A1553) (A1554) (A1555) (A1556) (A1557) (A1558) (A1559) (A1560) (A1561) (A1562) (A1563) (A1564) (A1565) (A1566) (A1567) (A1568) (A1569) (A1570) (A1571) (A1572) (A1573) (A1574) (A1575) (A1576) (A1577) (A1578) (A1579) (A1580) (A1581) (A1582) (A1583) (A1584) (A1585) (A1586) (A1587) (A1588) (A1589) (A1590) (A1591) (A1592) (A1593) (A1594) (A1595) (A1596) (A1597) (A1598) (A1599) (A1600) (A1601) (A1602) (A1603) (A1604) (A1605) (A1606) (A1607) (A1608) (A1609) (A1610) (A1611) (A1612) (A1613) (A1614) (A1615) (A1616) (A1617) (A1618) (A1619) (A1620) (A1621) (A1622) (A1623) (A1624) (A1625) (A1626) (A1627) (A1628) (A1629) (A1630) (A1631) (A1632) (A1633) (A1634) (A1635) (A1636) (A1637) (A1638) (A1639) (A1640) (A1641) (A1642) (A1643) (A1644) (A1645) (A1646) (A1647) (A1648) (A1649) (A1650) (A1651) (A1652) (A1653) (A1654) (A1655) (A1656